

Tacoma United San Martin B02

Tacoma United FC

Tacoma, WA

B02 total strength=450

attack=0.44 defense=0.2

fall league = DIII B11D1, Spr PSPL Super League

alt names used:

Tacoma United San Martin

San Martin

BU11 San Martin

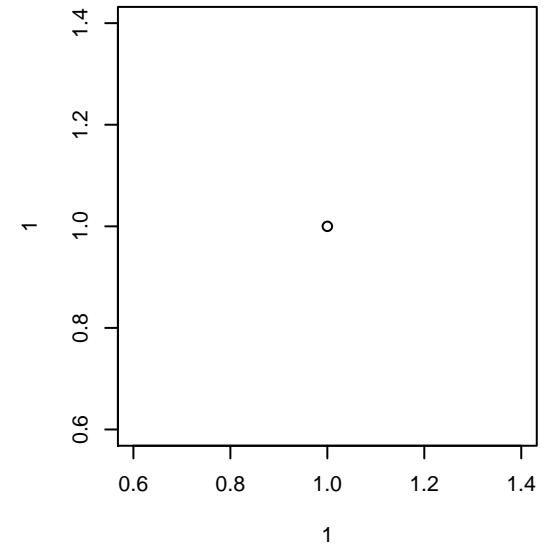
Venues played:

Starfire Spring Classic BU11

DIII B11D1

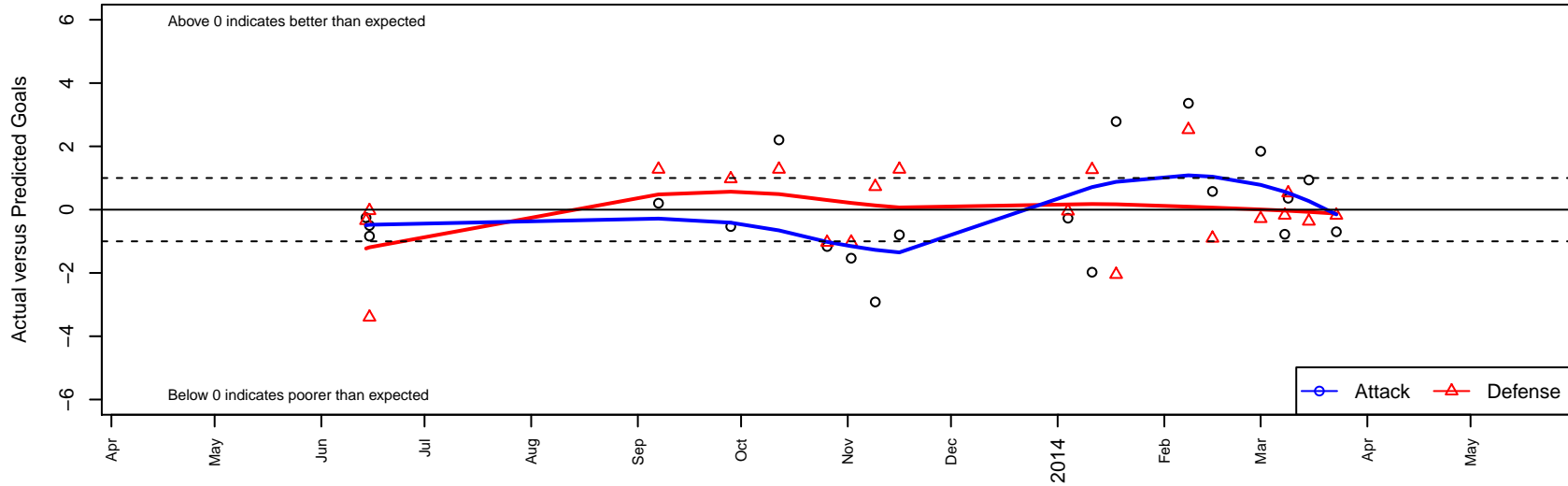
Founders Cup B02

Spr PSPL Super League U11



Tacoma United San Martin B02

Dots are actual minus expected GF (blue circles) and GA (red triangles).
Blue line is smoothed change in attack strength. Red is smoothed change in defense strength.



	date	home		away		venue	pred.home	pred.away
25320	2014-03-23	ISC Gunners A B03	3	Tacoma United San Martin B02	1	Spr PSPL Super League U11	2.82	1.70
24563	2014-03-15	Tacoma United San Martin B02	2	MVP Rapids Navy B02	5	Spr PSPL Super League U11	1.06	4.63
24208	2014-03-09	Normandy Park FC White B02	3	Tacoma United San Martin B02	1	Spr PSPL Super League U11	3.53	0.64
23863	2014-03-08	Tacoma United San Martin B02	1	Central WA SA Navy B02	4	Spr PSPL Super League U11	1.78	3.82
23406	2014-03-01	Tacoma United San Martin B02	3	Wenatchee Fire Black B02	4	Spr PSPL Super League U11	1.16	3.72
22467	2014-02-15	Tacoma United Little Stars B02	3	Tacoma United San Martin B02	3	Spr PSPL Super League U11	2.10	2.42
22251	2014-02-08	Tacoma United San Martin B02	4	Normandy Park FC White B02	1	Spr PSPL Super League U11	0.64	3.53
21302	2014-01-18	Tacoma United San Martin B02	6	ISC Arsenal Red B02	3	Founders Cup B02	3.21	0.95
21058	2014-01-11	NSC Barca B02	1	Tacoma United San Martin B02	0	Founders Cup B02	2.26	1.98
20890	2014-01-04	Seattle United W Blue B02	3	Tacoma United San Martin B02	1	Founders Cup B02	2.95	1.27
18322	2013-11-16	Nortac Colibri B03	1	Tacoma United San Martin B02	2	DIII B11D1	2.28	2.80
17557	2013-11-09	Tacoma United San Martin B02	3	Kent United Black B02	0	DIII B11D1	5.92	0.73
16543	2013-11-02	Tacoma United San Martin B02	3	Federal Way Arsenal B02	2	DIII B11D1	4.53	0.97
15659	2013-10-26	Federal Way Wolfpack B02	2	Tacoma United San Martin B02	3	DIII B11D1	0.97	4.16
13653	2013-10-12	Tacoma United San Martin B02	5	Nortac Colibri B03	1	DIII B11D1	2.80	2.28
11728	2013-09-28	Federal Way Arsenal B02	0	Tacoma United San Martin B02	4	DIII B11D1	0.97	4.53
8828	2013-09-07	Nortac Colibri B03	1	Tacoma United San Martin B02	3	DIII B11D1	2.28	2.80
1079	2013-06-15	Seattle United S Black B02	10	Tacoma United San Martin B02	0	Starfire Spring Classic BU11	6.60	0.84
1082	2013-06-15	ISC Gunners A B02	6	Tacoma United San Martin B02	0	Starfire Spring Classic BU11	5.97	0.50
916	2013-06-14	Tacoma United San Martin B02	0	Surrey United 2003B	6	Starfire Spring Classic BU11	0.25	5.65